

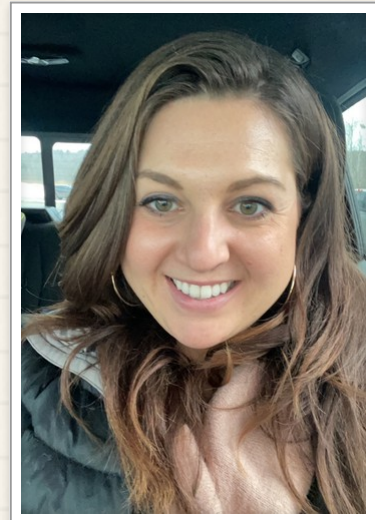
# The Lion Ledger

9/10/21 BE KIND, BE CONFIDENT, BE RESPECTFUL, WORK HARD

LET'S GIVE A "LIONS ROAR" ...

## MARISSA DYAR - 5TH GRADE TEACHER

We welcome Marissa Dyar to our 5th Grade team this year! Mrs. Dyar moved to South Carolina all the way from Maine. She has spent her previous years as an Education Technician, 3rd grade teacher and a 4th grade teacher, but most recently she has enjoyed being a stay-at-home mom to her two boys. From state parks to beaches, Mrs. Dyar and her family love exploring all the wonderful things South Carolina has to offer. When she's not exploring or traveling to Maine to visit family, she loves working on home projects, reading and playing family games. Mrs. Dyar is grateful for the warm welcome she has received from NPE and this community. Her students have already stolen her heart, reminding her why she is back to doing what she loves.



## WEEKLY BADGE CHALLENGE



CONGRATULATIONS TO THE CLASSES THAT EARNED THEIR "CONFIDENCE BADGES".

Each week, New Providence highlights a different "Badge Challenge" for each classroom to earn, based on the pillar terms of our vision. Last week's challenge was to earn the "Confidence Badge". The goal is set for each class to have 100% participation in showcasing the weekly skill. Congratulations to all the classes that earned this badge!

With all the classes that earn their badge, a random drawing is held to honor six classrooms. These classrooms are

showcased on our "Wall of Fame" for the week. Here are our random prize winners for the "Confidence Badge":

- Mrs. Drawdy's class (2nd grade)
- Mrs. Herring/West's class (2nd grade)
- Mrs. Cook/Patangan's class (5th grade)
- Ms. Rodriguez's class (4th grade)
- Mrs. Robinson's class (3rd grade)
- Mrs. Storey's Class (K-2)

## INTRODUCING...DREAMBOX

# DREAMBOX

Learning



**DreamBox is a digital math program designed to complement our math curriculum.**



**The program provides rigorous and interactive lessons that adapt to the needs of each student.**



**DreamBox is accessed through LaunchPad.**



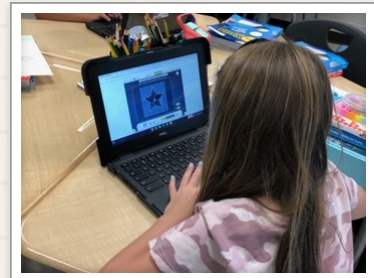
**Students should complete at least one lesson a day in DreamBox.**



For more info contact Mrs. Corley  
[scorley@lexington1.net](mailto:scorley@lexington1.net)

## A FEW WORDS FROM 4TH GRADE TEACHER, ANDREW BROOKS ABOUT DREAMBOX...

While we have only been using DreamBox for a short period of time, I am already seeing the benefits of the program. The children were immediately drawn to the manner in which DreamBox engages them. The program individualizes the activities to meet students where they are with their learning, and provides students with the rigor necessary to move them forward with their learning. Students are so excited to reach new levels and advance through the program. It's a joy to witness the students learning and enjoying the learning process.



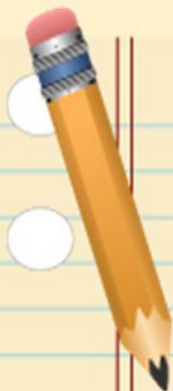
## SEPTEMBER CALENDAR OF EVENTS...

**Wednesday, September 15<sup>th</sup>**  
**Collaborative Planning Day**

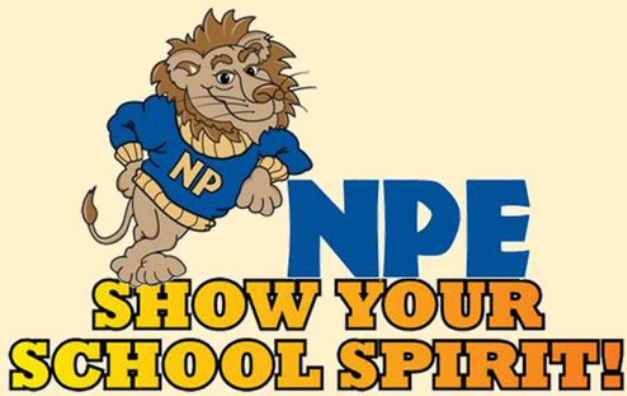
**Students dismiss**

**at 11:40 am**

*Lunch will be served*



**EARLY DISMISSAL**



**Wear your  
NPE shirt or  
school colors  
(blue, tan &  
white) for  
Spirit Day!**

**Friday, September 24<sup>th</sup>**

## ATTENDANCE & REPORTING SCHOOL ABSENCES

Every time your child is absent, the attendance office needs to be notified in writing (medical excuse or parent note). See options below. This will keep your child from being truant. Please be aware that a student is only allowed 10 parent notes per school year, so always try to provide a medical excuse when possible.

1. You can email a medical/dental excuse to [aharrison@lexington1.net](mailto:aharrison@lexington1.net) (preferred)
2. Submit a Parent Note electronically "[Click Here](#)" (preferred)
3. Send in a written excuse or a copy of a medical excuse with your child upon his/her return.

Also, please know that sending an email to your child's teacher is appreciated, but is not considered a valid excuse. You must communicate with the attendance office.

If you have questions regarding attendance, please email [aharrison@lexington1.net](mailto:aharrison@lexington1.net) or call 803-821-3304.

### **Late School arrival and Early Dismissals...**

Please keep all late arrivals and early dismissals to a minimum. Students must be present for at least 50% of the school day in order to be counted present for the day.

DO YOU ENJOY WORKING WITH CHILDREN AND  
EMPOWERING OUR YOUTH?

# ARE YOU WANTING TO WORK WHEN IT FITS YOUR SCHEDULE?

*Come to work for*

**EMPOWER 1**  
LEXINGTON COUNTY SCHOOL DISTRICT ONE

*Substitute Teachers Wanted!*

*Apply Today!*

Visit [www.JoinLexington1.com](http://www.JoinLexington1.com) and Click **APPLY NOW**

LEXINGTON COUNTY SCHOOL DISTRICT ONE HAS AN EXCITING OPPORTUNITY FOR INDIVIDUALS WHO WOULD LIKE TO WORK WITH OUR SCHOOLS IN OUR SUBSTITUTE PROGRAM.

- Create your own schedule by choosing your work days and locations!
- Family-friendly work hours!
- Stay in touch with our schools and make a difference in a student's life!
- Participation in SC Retirement System!
- And recently increased daily rate of pay!

For additional questions, contact Lydia Ancrum, Substitute Specialist at (803) 821-1191 or [lancrum@lexington1.net](mailto:lancrum@lexington1.net)

Lexington County School District One  
100 Tarrar Springs Road, Lexington, SC 29072

## SCHOOL IMPROVEMENT COUNCIL (SIC) NOMINEES FOR 2021-2022

The Nominees for the 2021-2022 NPE School Improvement Council are:



- Lindsay Alexander
- Jeff Leiertz
- Melissa Newkirk
- Misty Stathos

We'll be sending out an electronic ballot next week for voting to take place. We have two, 2-year parent positions open. **Congratulations to the nominees!**

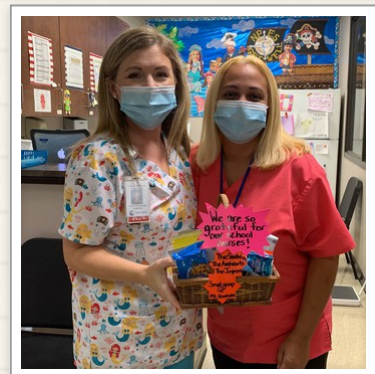
### Here's a little about the purpose of the NPE SIC:

SIC is a great way to get involved at New Providence Elementary School. The purpose of the NPE SIC is to:

- Assist in the preparation of the annual school improvement report including needs assessment, development of objectives and strategies, implementation and monitoring, and preparation of yearly assessment reports;
- Provide advice and input on the use of school innovation funds as provided by the state;
- Serve as a liaison between the school, school organizations, the community, and the local school board by collecting and disseminating information about school improvement;
- To review and give feedback regarding the Professional Development School relationship with the University of South Carolina and other partner schools;
- Provide other assistance that the principal may request as well as carrying out other duties prescribed by the local school board.

## THANK YOU TO OUR COMMUNITY MEMBERS AT MT. HOREB UNITED METHODIST CHURCH

Acts of kindness always bring a smile to our faces. There's nothing like a basket of goodies to brighten our day. THANK YOU to Mt. Horeb for providing a delicious basket of snacks for our staff and our Nurses. Your kindness is so appreciated!



## BIRTHDAY CELEBRATIONS

## HOW DO I CELEBRATE MY CHILD'S BIRTHDAY WITH THE CLASS?

Let us help you! Since we do not allow any outside food deliveries to the classroom, our NPE Cafe is offering an alternative to help celebrate your child's Birthday. Complete the form below and send in to your child's teacher at least 3 days prior to the celebration. Our cafeteria staff will deliver your choice of cookies or cupcakes to the classroom. Email Erica Wilson, cafeteria manager with additional questions at [ewilson@lexington1.net](mailto:ewilson@lexington1.net).



Classroom\_Celebrations.pdf

 [Download](#)  
3.7 MB

CONNECT WITH NPE THROUGH ALL OUR SOCIAL MEDIA CHANNELS...



**NEW PROVIDENCE ELEMENTARY**  
*Connect With Us!*



**On Instagram:** NPESLex1



**On Twitter:**

@ NPESLex1 and tag your tweet:  
#NPELions #WeAreNPE



**On Facebook:** New Providence Elementary



[www.npes.lexington1.net](http://www.npes.lexington1.net)



Receive text messages from your school! If you haven't already set up an account or would like to make changes to your account, go to:

- [www.lexington1.net](http://www.lexington1.net)
- Select "I am Parent/Guardian"
- Select "School Messenger"



LIKE NPE ON  
FACEBOOK!



FOLLOW NPE ON  
TWITTER!



FOLLOW NPE ON  
INSTAGRAM!



## VISIT OUR WEBSITE



New Providence Elementary Sch...

[schools.lexington1.net](https://schools.lexington1.net)

## NEED TECHNICAL HELP?

**NPESTECHNICALHELP@LEXINGTON1.  
NET**

In the event your student needs technical help with their device, please email us at [npestechnicalhelp@lexington1.net](mailto:npestechnicalhelp@lexington1.net). This email is checked by our staff throughout the day and someone will gladly respond to assist you. We can also assist with academic questions, as well! Go LIONS!



## NEED TO REPORT COVID-19 RELATED ITEMS?

**EMAIL NURSE CHRISTA  
(CWACKERHAGEN@LEXINGTON1.NET)**

Do you need to report a COVID-19 related issue? Please email Nurse Christa at [cwackerhagen@lexington1.net](mailto:cwackerhagen@lexington1.net). During normal school hours you can reach nurse Christa at (803) 821-3324. We ask that all parents report symptoms or positive test results immediately. Thank you for your assistance as we navigate these challenging times.

## JOIN THE PTA



We encourage all families to join the NPE PTA. This wonderful organization does so much to help the children and staff experience success! We need you. Take a look at the attached forms and send completed forms and payment to your child's homeroom teacher. Go LIONS!



Member form Updated.pdf

[Download](#)  
43.5 KB



PTA sponsor v2.pdf

[Download](#)  
331.1 KB

## NEED ASSISTANCE?



We are here to help! Call us at (803) 821-3300 or send an email to [NPES@lexington1.net](mailto:NPES@lexington1.net).

Your administrators are also here to assist:

Robert Candillo (Principal) [rcandillo@lexington1.net](mailto:rcandillo@lexington1.net)

Lakisha Cook (Assistant Principal) [lhcook@lexington1.net](mailto:lhcook@lexington1.net)

Becca Matthews (Assistant Principal)

[rmatthews@lexington1.net](mailto:rmatthews@lexington1.net)



## NEW PROVIDENCE ELEMENTARY SCHOOL

[Facebook](#) [@NPES\\_Lex1](#)

1118 Old Cherokee Road  
Lexington, SC 29072

[1118 Old Cherokee Road, Lexin...](#)

[npes@lexington1.net](mailto:npes@lexington1.net)

[803-821-3300](tel:803-821-3300)

[npes.lexington1.net/](http://npes.lexington1.net/)